

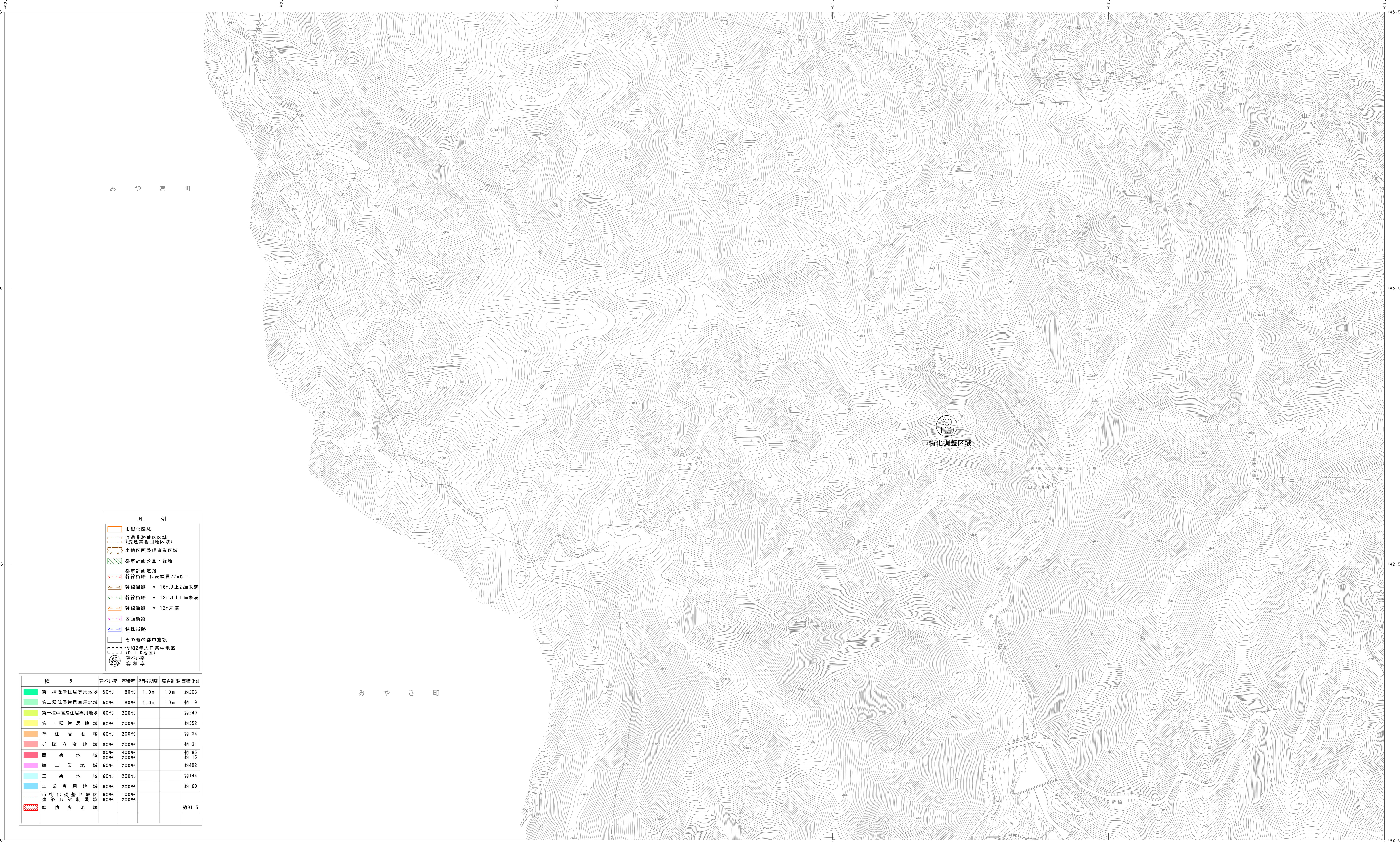
記号

- 標高 (Elevation)
- ▲ 三角点 (Triangulation Station)
- △ 一等三角点 (First-Order Triangulation Station)
- △ 二等三角点 (Second-Order Triangulation Station)
- △ 三等三角点 (Third-Order Triangulation Station)
- △ 四等三角点 (Fourth-Order Triangulation Station)
- △ 五等三角点 (Fifth-Order Triangulation Station)
- △ 六等三角点 (Sixth-Order Triangulation Station)
- △ 七等三角点 (Seventh-Order Triangulation Station)
- △ 八等三角点 (Eighth-Order Triangulation Station)
- △ 九等三角点 (Ninth-Order Triangulation Station)
- △ 十等三角点 (Tenth-Order Triangulation Station)
- △ 十一等三角点 (Eleventh-Order Triangulation Station)
- △ 十二等三角点 (Twelfth-Order Triangulation Station)
- △ 十三等三角点 (Thirteenth-Order Triangulation Station)
- △ 十四等三角点 (Fourteenth-Order Triangulation Station)
- △ 十五等三角点 (Fifteenth-Order Triangulation Station)
- △ 十六等三角点 (Sixteenth-Order Triangulation Station)
- △ 十七等三角点 (Seventeenth-Order Triangulation Station)
- △ 十八等三角点 (Eighteenth-Order Triangulation Station)
- △ 十九等三角点 (Nineteenth-Order Triangulation Station)
- △ 二十等三角点 (Twentieth-Order Triangulation Station)
- △ 二十一等三角点 (Twenty-First-Order Triangulation Station)
- △ 二十二等三角点 (Twenty-Second-Order Triangulation Station)
- △ 二十三等三角点 (Twenty-Third-Order Triangulation Station)
- △ 二十四等三角点 (Twenty-Fourth-Order Triangulation Station)
- △ 二十五等三角点 (Twenty-Fifth-Order Triangulation Station)
- △ 二十六等三角点 (Twenty-Sixth-Order Triangulation Station)
- △ 二十七等三角点 (Twenty-Seventh-Order Triangulation Station)
- △ 二十八等三角点 (Twenty-Eighth-Order Triangulation Station)
- △ 二十九等三角点 (Twenty-Ninth-Order Triangulation Station)
- △ 三十等三角点 (Thirtieth-Order Triangulation Station)
- △ 三十一等三角点 (Thirty-First-Order Triangulation Station)
- △ 三十二等三角点 (Thirty-Second-Order Triangulation Station)
- △ 三十三等三角点 (Thirty-Third-Order Triangulation Station)
- △ 三十四等三角点 (Thirty-Fourth-Order Triangulation Station)
- △ 三十五等三角点 (Thirty-Fifth-Order Triangulation Station)
- △ 三十六等三角点 (Thirty-Sixth-Order Triangulation Station)
- △ 三十七等三角点 (Thirty-Seventh-Order Triangulation Station)
- △ 三十八等三角点 (Thirty-Eighth-Order Triangulation Station)
- △ 三十九等三角点 (Thirty-Ninth-Order Triangulation Station)
- △ 四十等三角点 (Fortieth-Order Triangulation Station)
- △ 四一等三角点 (First-Class Triangulation Station)
- △ 四二等三角点 (Second-Class Triangulation Station)
- △ 四三等三角点 (Third-Class Triangulation Station)
- △ 四四等三角点 (Fourth-Class Triangulation Station)
- △ 四五等三角点 (Fifth-Class Triangulation Station)
- △ 四六等三角点 (Sixth-Class Triangulation Station)
- △ 四七等三角点 (Seventh-Class Triangulation Station)
- △ 四八等三角点 (Eighth-Class Triangulation Station)
- △ 四九等三角点 (Ninth-Class Triangulation Station)
- △ 五〇等三角点 (Tenth-Class Triangulation Station)
- △ 五一等三角点 (Eleventh-Class Triangulation Station)
- △ 五二等三角点 (Twelfth-Class Triangulation Station)
- △ 五三等三角点 (Thirteenth-Class Triangulation Station)
- △ 五四等三角点 (Fourteenth-Class Triangulation Station)
- △ 五五等三角点 (Fifteenth-Class Triangulation Station)
- △ 五六等三角点 (Sixteenth-Class Triangulation Station)
- △ 五七等三角点 (Seventeenth-Class Triangulation Station)
- △ 五八等三角点 (Eighteenth-Class Triangulation Station)
- △ 五九等三角点 (Nineteenth-Class Triangulation Station)
- △ 六〇等三角点 (Twentieth-Class Triangulation Station)
- △ 六一等三角点 (Twenty-First-Class Triangulation Station)
- △ 六二等三角点 (Twenty-Second-Class Triangulation Station)
- △ 六三等三角点 (Twenty-Third-Class Triangulation Station)
- △ 六四等三角点 (Twenty-Fourth-Class Triangulation Station)
- △ 六五等三角点 (Twenty-Fifth-Class Triangulation Station)
- △ 六六等三角点 (Twenty-Sixth-Class Triangulation Station)
- △ 六七等三角点 (Twenty-Seventh-Class Triangulation Station)
- △ 六八等三角点 (Twenty-Eighth-Class Triangulation Station)
- △ 六九等三角点 (Twenty-Ninth-Class Triangulation Station)
- △ 七〇等三角点 (Thirtieth-Class Triangulation Station)
- △ 七一等三角点 (Thirty-First-Class Triangulation Station)
- △ 七二等三角点 (Thirty-Second-Class Triangulation Station)
- △ 七三等三角点 (Thirty-Third-Class Triangulation Station)
- △ 七四等三角点 (Thirty-Fourth-Class Triangulation Station)
- △ 七五等三角点 (Thirty-Fifth-Class Triangulation Station)
- △ 七六等三角点 (Thirty-Sixth-Class Triangulation Station)
- △ 七七等三角点 (Thirty-Seventh-Class Triangulation Station)
- △ 七八等三角点 (Thirty-Eighth-Class Triangulation Station)
- △ 七九等三角点 (Thirty-Ninth-Class Triangulation Station)
- △ 八〇等三角点 (Fortieth-Class Triangulation Station)
- △ 八一等三角点 (Forty-First-Class Triangulation Station)
- △ 八二等三角点 (Forty-Second-Class Triangulation Station)
- △ 八三等三角点 (Forty-Third-Class Triangulation Station)
- △ 八四等三角点 (Forty-Fourth-Class Triangulation Station)
- △ 八五等三角点 (Forty-Fifth-Class Triangulation Station)
- △ 八六等三角点 (Forty-Sixth-Class Triangulation Station)
- △ 八七等三角点 (Forty-Seventh-Class Triangulation Station)
- △ 八八等三角点 (Forty-Eighth-Class Triangulation Station)
- △ 八九等三角点 (Forty-Ninth-Class Triangulation Station)
- △ 九〇等三角点 (Fiftieth-Class Triangulation Station)
- △ 九一等三角点 (Fifty-First-Class Triangulation Station)
- △ 九二等三角点 (Fifty-Second-Class Triangulation Station)
- △ 九三等三角点 (Fifty-Third-Class Triangulation Station)
- △ 九四等三角点 (Fifty-Fourth-Class Triangulation Station)
- △ 九五等三角点 (Fifty-Fifth-Class Triangulation Station)
- △ 九六等三角点 (Fifty-Sixth-Class Triangulation Station)
- △ 九七等三角点 (Fifty-Seventh-Class Triangulation Station)
- △ 九八等三角点 (Fifty-Eighth-Class Triangulation Station)
- △ 九九等三角点 (Fifty-Ninth-Class Triangulation Station)
- △ 一〇〇等三角点 (Sixtieth-Class Triangulation Station)
- △ 一〇一等三角点 (Sixty-First-Class Triangulation Station)
- △ 一〇二等三角点 (Sixty-Second-Class Triangulation Station)
- △ 一〇三等三角点 (Sixty-Third-Class Triangulation Station)
- △ 一〇四等三角点 (Sixty-Fourth-Class Triangulation Station)
- △ 一〇五等三角点 (Sixty-Fifth-Class Triangulation Station)
- △ 一〇六等三角点 (Sixty-Sixth-Class Triangulation Station)
- △ 一〇七等三角点 (Sixty-Seventh-Class Triangulation Station)
- △ 一〇八等三角点 (Sixty-Eighth-Class Triangulation Station)
- △ 一〇九等三角点 (Sixty-Ninth-Class Triangulation Station)
- △ 一〇〇等三角点 (Seventieth-Class Triangulation Station)
- △ 一〇一等三角点 (Seventy-First-Class Triangulation Station)
- △ 一〇二等三角点 (Seventy-Second-Class Triangulation Station)
- △ 一〇三等三角点 (Seventy-Third-Class Triangulation Station)
- △ 一〇四等三角点 (Seventy-Fourth-Class Triangulation Station)
- △ 一〇五等三角点 (Seventy-Fifth-Class Triangulation Station)
- △ 一〇六等三角点 (Seventy-Sixth-Class Triangulation Station)
- △ 一〇七等三角点 (Seventy-Seventh-Class Triangulation Station)
- △ 一〇八等三角点 (Seventy-Eighth-Class Triangulation Station)
- △ 一〇九等三角点 (Seventy-Ninth-Class Triangulation Station)
- △ 一〇〇等三角点 (Eightieth-Class Triangulation Station)
- △ 一〇一等三角点 (Eighty-First-Class Triangulation Station)
- △ 一〇二等三角点 (Eighty-Second-Class Triangulation Station)
- △ 一〇三等三角点 (Eighty-Third-Class Triangulation Station)
- △ 一〇四等三角点 (Eighty-Fourth-Class Triangulation Station)
- △ 一〇五等三角点 (Eighty-Fifth-Class Triangulation Station)
- △ 一〇六等三角点 (Eighty-Sixth-Class Triangulation Station)
- △ 一〇七等三角点 (Eighty-Seventh-Class Triangulation Station)
- △ 一〇八等三角点 (Eighty-Eighth-Class Triangulation Station)
- △ 一〇九等三角点 (Eighty-Ninth-Class Triangulation Station)
- △ 一〇〇等三角点 (Ninetieth-Class Triangulation Station)
- △ 一〇一等三角点 (Ninety-First-Class Triangulation Station)
- △ 一〇二等三角点 (Ninety-Second-Class Triangulation Station)
- △ 一〇三等三角点 (Ninety-Third-Class Triangulation Station)
- △ 一〇四等三角点 (Ninety-Fourth-Class Triangulation Station)
- △ 一〇五等三角点 (Ninety-Fifth-Class Triangulation Station)
- △ 一〇六等三角点 (Ninety-Sixth-Class Triangulation Station)
- △ 一〇七等三角点 (Ninety-Seventh-Class Triangulation Station)
- △ 一〇八等三角点 (Ninety-Eighth-Class Triangulation Station)
- △ 一〇九等三角点 (Ninety-Ninth-Class Triangulation Station)
- △ 一〇〇等三角点 (Hundredth-Class Triangulation Station)

- 市街化区域 (Urbanization Area)
- 流通業務地区区域 (流通業務団地地区) (Circulation Business District Area)
- 土地地区整理事業区域 (Land Area Reorganization Project Area)
- 都市計画公園・緑地 (City Planning Park/Green Land)
- 都市計画道路 幹線街路 代表幅員22m以上 (City Planning Road Main Street Representative Width 22m or more)
- 幹線街路 16m以上22m未満 (Main Street 16m or more, 22m less)
- 幹線街路 12m以上16m未満 (Main Street 12m or more, 16m less)
- 幹線街路 12m未満 (Main Street 12m less)
- 区画街路 (Block Street)
- 特殊街路 (Special Street)
- その他の都市施設 (Other Urban Facilities)
- 令和2年人口集中地区 (0.1D地区) 容積率 (Population Concentration Area (0.1D Area) Capacity Ratio)



平面直角座標は世界測地系2011に对应

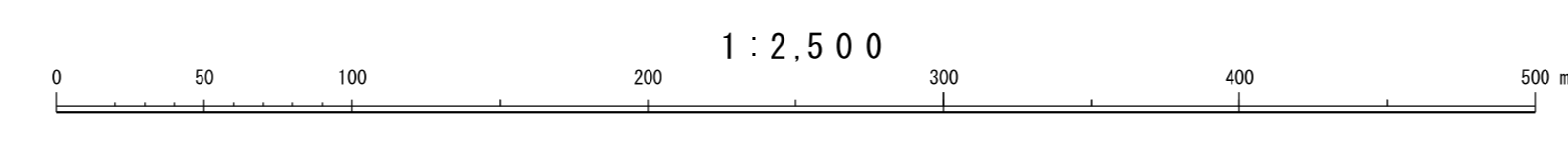


凡例

市街化区域	市街化調整区域	流通業務地区区域 (流通業務団地地区)	土地地区整理事業区域	都市計画公園・緑地	都市計画道路 幹線街路 代表幅員22m以上	幹線街路 16m以上22m未満	幹線街路 12m以上16m未満	幹線街路 12m未満	区画街路	特殊街路	その他の都市施設	令和2年人口集中地区 (0.1D地区) 容積率
-------	---------	---------------------	------------	-----------	-----------------------	-----------------	-----------------	------------	------	------	----------	-------------------------

種別	建ぺい率	容積率	建ぺい率	高さ制限 (m)	面積 (ha)
第一種低層住居専用地域	50%	80%	1.0m	10m	約203
第二種低層住居専用地域	50%	80%	1.0m	10m	約9
第一種中高層住居専用地域	60%	200%			約249
第一種住居地域	60%	200%			約552
準住居地域	60%	200%			約34
近隣商業地域	80%	200%			約31
商業地域	80%	400%			約85
準工業地域	60%	200%			約492
工業地域	60%	200%			約144
工業専用地域	60%	200%			約60
市街化調整区域内	60%	100%			約15
建築形態制限域	60%	200%			約91.5
準防火地域					

撮影 平成 17年 3月
 測図 平成 17年 12月
 撮影 平成 26年 3月
 測図 平成 26年 9月
 撮影 令和 4年 12月
 測図 令和 7年 3月



この測量成果は、国土地理院長の承認及び助言を得て民間所管の測量機及び測量成果を使用して得たものである (承認番号) 平17 九公第 86 号
 この測量成果は、国土地理院長の助言を受けたものである (助言番号) 平27 九公第 132 号
 この測量成果は、国土地理院長の助言を受けて得たものである (助言番号) 令6 九公第 330 号

計画機関 鳥 栖 市
 作業機関 国際航業株式会社