

英語

Recruiting Participants for the 2026 Saga Prefecture

Join for free!

First Semester

Online

Japanese Language Class

You'll be able to do things as below

- ✓ You will be able to greet and talk with you neighbors.
- ✓ You will be able to go shopping by yourself.
- ✓ You will be able to take the bus and train and travel far!
- ✓ You will get to know more about Saga Prefecture and your own town.
- ✓ You will be able to understand the useful Japanese words used in hospitals.

Schedule

For more details, please see the back side.

June	July	August	September	October
	Jun. 29 (Mon) - Aug. 29 (Sat) Introductory/N5 (A1)		Sept. 5 (Sat) - Oct. 31 (Sat) Beginner/N4 (A2)	

Place

Online (ZOOM)

Price

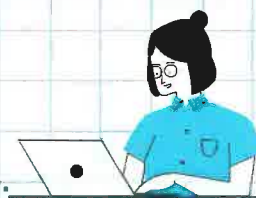
For free (¥0)

*The textbook is also for free and will be sent to your home.

Target learners

<Eligible participants>

- People living in Saga Prefecture
- People who can take lessons via ZOOM.
- People who have their own computer, tablet, or smartphone.
- People who are not enrolled in any elementary, junior and senior school, university, and Japanese language school.



For more details, please see the back side. >>>

【Organizer】



SAGA
PREFECTURAL
GOVERNMENT

【Contractor】



Human Academy
Japanese Language School

Class Schedule

Your current Japanese level

People who have just started studying Japanese

- Able to read Hiragana and Katakana
- Able to give a simple greeting such as "Konnichiwa" and "Arigatou"

People who have simple conversations

- Able to make simple requests like "I want to go to ~"
- Able to tell the date, time, and so on.

Introductory N5 (A1)

Date and Time

Jun. 29 (Mon) -Aug. 29 (Sat)
10:00~12:00

The number of lessons

24 times

Days Mon/Thu/Sat

Deadline
Jun.19
(Fri)

Beginner N4 (A2)

Date and Time

Sept. 5 (Sat) -Oct. 31 (Sat)
Mon. & Thu. 19:00~21:00
Sat. 10:00~12:00

The number of lessons

24 times

Days Mon/Thu/Sat

Deadline
Aug.17
(Mon)

First semester

STEP 1

Apply

Please enter your phone number or email address. We will contact you after applying.

STEP 2

Check your level

We will conduct an interview in Japanese online. This is necessary.

STEP 3

Participate in the class

You have to attend all 24 lessons. Full attendance is required.

*If there are many applications, the organizers will select the participants. We will contact you by Tuesday, June 23 for the Introductory Class and by Friday, August 21 for the Beginner Class to let you know whether you can participate or not.

Information about the second semester class

After the end of the first semester, we will offer the second semester. The content of the both classes is the same. Introductory Class will start in November, and Beginner Class will start in January. Details will be announced in September.

▽APPLY HERE▽

Contact information

Human Academy Japanese Language School

Fukuoka Campus

Phone:092-285-0046

Reception hours weekdays (Mon~Fri): 9:00~18:00

email : fjp@athuman.com

